

2021

CARAVAN SALON 2021

HIGHLIGHTS & SPECIAL OFFERS



 **DOMETIC** **OUTDOOR**

Join Dometic at Caravan Salon 2021 – Hall 14 / C03–C05

MOBILE LIVING MADE EASY.

FEEL AT HOME WHEREVER YOU GO

No need to leave the amenities of home behind when you are on the move. At this year's Caravan Salon Dometic presents a wide range of smart product solutions – all designed to turn your motorhome, caravan or campervan into a comfortable place to relax and refuel after an active day outdoors. We call it "Mobile living made easy."

Join us as we showcase the highlights for the 2022 season. Discover exciting novelties, talk to our experts and visit the Dometic Vision Vehicle to take a look at the future of mobile living!



DOMETIC HIGHLIGHTS AT CARAVAN SALON 2021

NEW PRODUCTS

Dometic CH series

Combo heaters for cabin air and hot water 4 – 5

Dometic SP 310/FP 210

New darkening system for Fiat Ducato V8 6 – 7

Dometic 10-series RV refrigerators

Complete family of absorption and compressor refrigerators 8 – 9

Dometic inflatable awnings

Awnings, windbreaks, rooftop tent, modular shelter 12 – 21

TRADE FAIR OFFER

Dometic FreshJet promotion at Caravan Salon 2021

Buy a FreshJet roof air conditioner during the show and get the installation for free!

10 – 11

SPECIAL REPORT

Dometic Ambassadors

Sebastian Canaves and Line Dubois 16 – 17

ALSO ON SHOW

Dometic Patrol Ice Boxes

Tough for years of outdoor adventure 22 – 23

Dometic Drinkware

Stainless steel cups, bottles and tumblers 24

CORPORATE NEWS

New Dometic Group members 25

INNOVATION VEHICLE

The future of mobile living 26 – 27

Full climate solution

Next-generation kitchen gear

Future concepts

Dometic on the web

Here's where you can find the complete Dometic range, with detailed information about all products. Plus, interesting facts about our company and download links for all of our catalogues.

[dometic.com](https://www.dometic.com)

New

COMING HOME TO A COZY PLACE

Imagine coming home to a cozy place after an active day in the great outdoors. The cabin is warm and comfortable and there's enough hot water for you and your family to take a shower. Your Dometic combo heater has taken care of everything – and just in time, too, thanks to its smart control system. A few easy settings on the control panel are enough to program the coming home timers for your cabin and water tank heating. You can also save your favorite settings for quick recalling.



COMBO HEATERS FOR CABIN AIR AND HOT WATER

DOMETIC CH SERIES

Product benefits at a glance

- 2-in-1 unit: heats up the cabin air and 10 l hot water
- Super-fast water heater allows several showers with almost no break in-between
- Intuitive control via the smart control panel
- Independent air and water heating – save energy by only heating air and water when needed
- Cabin vent mode – ventilation possible without operating air heater
- Save your favorite settings for quick setup
- Flawless integrated design



COMING SOON ...

Combo heater, air conditioner and ventilation interacting in a “Full Climate” solution.

Read more on this on p. 26, or visit our Innovation Vehicle at the Caravan Salon show!



Intuitive control panel

Easy operation and convenient programming



Smart chimney cover design

Repels water away from the wall



3-in-1 safety system

Integrating a frost-, drain- and over-pressure valve



4 warm air outlets

Uniform heat distribution throughout the cabin

Dometic CH combo heaters give you a cozy place to relax after your outdoor adventure. They are available in four performance classes to suit different requirements – 4000 or 6000 W LPG fuelled models, or combined LPG/electric versions with a full 1800 W extra capacity in electric mode on top of the 4000 or 6000 W.

Dometic CH combo heater models available

Dometic CH4000 / Combo heater 4000 W, LPG

Dometic CH6000 / Combo heater 6000 W, LPG

Dometic CH4000E / Combo heater 4000 W/1800 W, LPG/electric

Dometic CH6000E / Combo heater 6000 W/1800 W, LPG/electric

New

KEEP OUT HEAT, COLD AND PRYING EYES

DOMETIC SP 310

This lightweight side window darkening system was custom-made for Fiat Ducato Series 8 models from July 2021. Custom-fitted on both sides and combined with our FP 300/FP 210 windscreen blinds, it provides smart all-around protection against the sun, cold and prying eyes. Double-pleated honey-comb darkening material ensures optimized insulation as well as maximum robustness.

Benefits with Dometic SP 310

- Double-pleated honeycomb material for optimized insulation and maximum robustness
- Effective darkening thanks to 100 % light-tight material
- Easy and comfortable handling with comfort close function
- Hassle-free installation – no need to disassemble any door components
- Extremely lightweight construction – about 1 kg less per side than with competitor products
- Perfect finish – looks like an integrated solution
- Optimized clearance for visibility of the little passenger mirror



Quick installation

Simply attach the frame holding the blind – no need to dismantle any components



Ease to use

Ergonomic handle for convenient operation, with comfort closing function



Smart snug fit

Looks like a factory fitted option

New

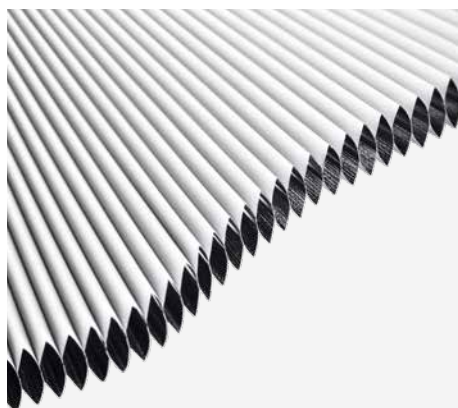
DARKENING SYSTEM FOR FIAT DUCATO

DOMETIC FP 210

This double-pleated windscreen blind was specially designed for Fiat Ducato and similar models, such as the Peugeot Boxer and Citroën Jumper models from July 2006 onwards. Enjoy greater privacy and maintain comfortable temperatures by keeping out heat or cold. The Dometic FP 210 windscreen darkening blind is easy to install and suitable for left- and right-hand-drive vehicles. It also fits the new Fiat Ducato Series 8 models equipped with mechanical or electronic central rearview mirrors.

Windscreen blind for Fiat Ducato (series 8) and older makes

- Double-pleated honeycomb material for optimized insulation and maximum robustness
- Simple, comfortable, stepless handling ensures privacy protection
- Effective darkening thanks to 100 % light-tight material
- Specially developed for vehicles with central rear mirror
- Perfect finish – looks like an integrated solution
- Not suitable for vehicles with folding beds, parcel shelves, head-up displays or optionally installed A-pillar airbags
- Suitable for vehicles with rain or camera sensor boxes



Double pleated Duette honeycomb material

Maximum thermal insulation and darkening effect

MODEL	WITH CENTRAL REAR MIRROR	WITHOUT CENTRAL REAR MIRROR	RAIN SENSOR BOX	CAMERA SENSOR BOX	VEHICLE TYPES
FP 300		✓	✓	✓	Peugeot Boxer, Citroën Jumper, new Opel Movano and Fiat Ducato (old and new)
FP 210	✓		✓	✓	Peugeot Boxer, Citroën Jumper, new Opel Movano and Fiat Ducato (old and new)
SP 300					Peugeot Boxer, Citroën Jumper, Fiat Ducato (until 07/2021) and new Opel Movano
SP 310					For new Fiat Ducato only (Series 8)

Complete product family!

UPGRADE TO NEW LEVELS OF COOL

WITH A DOMETIC 10-SERIES ABSORPTION OR COMPRESSOR REFRIGERATOR

Their doors open both left and right. That alone places our 10-series RV refrigerators in a class of their own. Unique double-hinged doors and a versatile interior let you maximize the space you have with less compromise. Elegant, energy-efficient and so easy to use – it's a definite upgrade on your next adventure.

At Caravan Salon 2021 we are presenting the complete family: 10-series refrigerators in different sizes, with noiseless absorption cooling or high-performance compressor technology. Simply pick the model to suit your vehicle and upgrade to new levels of cool!



Absorption fridges

Compressor fridges



Dual-door refrigerator

With separate left/right doors for fridge and freezer compartment



Patented removable freezer compartment

With double-hinged door for convenient opening left or right (single-door models only)



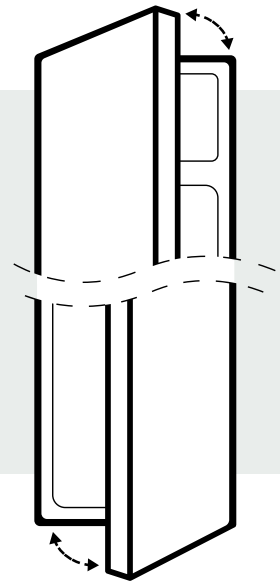
VG-fresh crisper

With adjustable partitions, adjustable humidity and a lid that serves as an extra storage shelf



UNIQUE BENEFIT: THE DOUBLE-HINGED DOOR

Thanks to this patented solution, all 10-series refrigerators can be opened to the left and right, without the need to change the hinge. Simply use one of the two convenient and elegant aluminium handles, which extend across the entire height of the refrigerator for easy opening at any height. A two-point locking system keeps the door securely in place at all times.



Refreshing features

- Double-hinged door – opens left and right without the need to change the hinge
- Removable freezer compartment with double-hinged door (single-door models)
- Freezer compartment with separate double-hinged door (dual-door models)
- Noiseless absorption cooling or powerful, energy-efficient compressor technology
- Ease of use with intuitive TFT display and turn/push button
- Elegant aluminium door handles extending over the complete fridge height
- Two-point locking mechanism on either side for increased safety
- Flat door with customizable decor panel (variable thickness 1.2 mm – 3 mm)
- VG-Fresh crisper with adjustable humidity keeps fruits and vegetables fresh for longer
- CI bus connectivity for convenient operation via a central control panel



TFT control panel

Intuitive control of cooling temperature and comfort features



Versatile interior

Innovative design makes best and most flexible use of available space



Two-point locking system

Fitted on each side of the fridge door for safe and secure usage

CLIMATE COMFORT IN CLASS OF ITS OWN

DOMETIC FRESHJET ROOF AIR CONDITIONERS

Dometic FreshJet 3000

Amazingly quiet and energy-saving

The FreshJet 3000 is our latest innovation in air conditioning. It was specially designed for larger motorhomes and caravans 7 m long or longer. Our engineers have struck a balance between utilising a lightweight, compact design and having an impressive heating and cooling performance. The definite highlight is the patented dual-cylinder inverter, which ensures amazingly quiet and energy-saving operation.

Roof air conditioner for vehicles over 7 m in length, 2516 W

- Patented dual-cylinder inverter compressor reduces vibration and noise
- Cool, warm or dehumidify air at the touch of a button
- Low start-up current ensuring easy start up even with low electrical protection
- Cooling capacity: 2516 W / 8600 BTU/h
- Heating Capacity: 3107 W
- LED ambient light in the air distribution box can be activated via the remote control



Dometic FreshJet compact class

Roof air conditioners for campervans and RVs up to 7m, in white or grey

Elegant design and a low installation height make our compact FreshJet 2200 model a perfect fit for campervans or smaller recreational vehicles up to 7 m long. The soft-start function ensures smooth and reliable start-up even on campsites with low electrical protection.



Dometic FreshJet 2200

- Ultra-compact and lightweight design
- Cool, warm or dehumidify air at the touch of a button
- Soft-start for reliable start-up at campsites with low electrical protection
- Cooling capacity: 2200 W / 7500 BTU/h
- Heating Capacity: 1200 W

Special offer

EVERY MORNING IS THE START OF A NEW ADVENTURE

Nothing beats slipping behind the wheel and getting away for a few days. Waking up with a new view. Reconnecting with nature. Enjoying the freedom to go wherever you want and stay as long as you like. Your FreshJet roof air conditioner gives you a comfortable place to rest and relax after an active day – pleasantly cool in the summer heat, or cosily warm when it's chilly out. Discover all the cool FreshJet benefits now and check our trade fair offer!

AIRCON OFFERS:

Also check our Comfort Weeks offer – valid only until end of September:

Buy an A/C and get 5 nights for free at LeadingCampings!

Further information and participating dealers at dometic.com/comfortweeks

FRESHJET PROMOTION AT CARAVAN SALON

BUY DURING THE SHOW AND GET THE INSTALLATION FOR FREE

Looking to invest or upgrade? Why not buy it right now, at the Caravan Salon? Benefit from our trade fair special and get the installation for free! The offer is valid only during the show and only for vehicles with a standard roof cut-out of 40 x 40 cm.



New

PERFECT FROM EVERY ANGLE

DOMETIC ACE AIR ALL SEASON 400

Innovative and versatile, the Dometic Ace AIR All-Season awning combines a spacious interior with an ultra-rugged, waterproof exterior. Featuring our unique multi-height vehicle fitting system and patented Single Point Inflation AIR Frame, the Dometic Ace AIR

All-Season is the center of your outdoor adventures and the perfect addition to your RV.

Inflatable modular shelter

- Well-protected and durable Single Point Inflation Air Frame technology
- Waterproof Weathershield™ Pro material for longevity and weather resistance
- Use as a standalone shelter or attach to your campervan or SUV



Multi-height system

Height adjustable awning technology ensures fitment across multiple vehicle types



Extra depth

Generous 3 m depth creates a spacious awning interior



Weathershield™ All-Season

Ultra-rugged and UV resistant material, perfect for touring in warmer climates and for use on a seasonal pitch

New

ADVENTURE RESPONSIBLY

DOMETIC LEGGERA AIR REDUX 220 S

We love the outdoors. As pioneers in the mobile living arena, we are committed to driving sustainability in our industry. Because we want nature to be a resource for everyone to enjoy and explore. Forever.

The new Weathershield Redux material used on our Redux awnings is an important step towards our collective goals. Plastic waste is a major environmental issue but we can play our part by turning a problem into a solution. The material name, Redux, meaning 'brought back', hints at the responsible construction of our new awnings, tents and furniture. Weathershield Redux is made from 100% recycled plastic bottles and is Global Recycled Standard certified. This new material is only one of the many ways Dometic is ensuring future sustainability across the whole company, to balance our environmental, economic and social impact.

We're now on the move to a better tomorrow, but we're not there yet.



Inflatable static awning

- Single point inflation AIR Frame technology ensures a strong structure and easy set up
- Waterproof, lightweight and environmentally responsible. Weathershield™ Redux material is woven from recycled bottle yarn.
- Apex ventilation with weather protected corner vents



MADE WITH
RECYCLED
MATERIALS

**TEN 0.5L PLASTIC BOTTLES = 1 METRE OF REDUX MATERIAL.
THE DOMETIC LEGGERA 220 REDUX
USES APPROXIMATELY 21 METRES OF MATERIAL.**

=210



**THAT MEANS 210 BOTTLES
HAVE BEEN RECYCLED TO
MAKE THIS TENT.**

New

VITAL PROTECTION FROM THE WIND

DOMETIC INFLATABLE WINDBREAK RANGE

Never has a windbreak been so easy to set-up. Simply peg and pump to enjoy the AIR Break's free-standing protection. You can even connect it to the front of your Dometic awning to create a fully enclosed area – great for keeping dogs in.



Dometic AIRBreak All-Season 5

- Single Point Inflation AirFrame technology
- Fast set-up
- Air Frame technology ensures a strong structure
- Single Point Inflation makes set up easy
- Award-winner for best camping innovation

Dometic Airbreak Pro 3

- Single Point Inflation AirFrame technology
- Fast set-up
- Air Frame technology ensures a strong structure
- Single Point Inflation makes set up easy
- Award-winner for best camping innovation



New

AIRBREAK DOOR

Dometic Airbreak Pro Door

Provide easy access to your pitch with the Dometic AIR Break Door. Simply zip-on aside your AIR Break and conveniently close off your pitch, adding privacy and keeping pets in. The inflatable door panels meet magnetically and can be pegged down too for additional security in windy conditions.





**"GREAT GEAR IS
ESSENTIAL FOR THE
GREAT OUTDOORS."**

Sebastian Canaves





LIVE ON CARAVAN SALON:

Meet off-road adventurers and Dometic Ambassadors, Sebastian Canaves and Line Dubois on the Dometic booth.

Sebastian Canaves and Line Dubois are always on-the-go and off-the-path, traveling the world and sharing their experiences. In their Mercedes Sprinter 4x4 Camper, the two travelling mates have various Dometic products on board – including a smart 70-liter compressor fridge that can be opened left or right.

With over 100 countries under his belt, Sebastian is truly on a mission to explore the world. Some eight years ago Line joined him on his travels. Since then the two of them spend their days adventuring in their campervan and running Germany's largest online outdoor travel and adventure website, **off-the-path.com**.

Growing up on the island of Mallorca, Sebastian spent his first fourteen years hiking, swimming, and sailing. Falling in love with nature and the thrill of the outdoors was built in to his childhood. His family uprooted and moved to Germany when he was a teenager. After he graduated from high school, he left for Brisbane, Australia to start his career. Since then, he has lived in ten countries and speaks five languages fluently, and is always on the move. His first taste of mobile living was in Western Australia where he spent

six weeks in a tiny campervan with the bare minimum of supplies and utilities.

These humble beginnings are a stark contrast to today, as Sebastian has fitted a former construction site vehicle, a Mercedes Sprinter Camper 4x4, into the ultimate traveling camper mobile with all the things he needs to stay dry, warm, and happy no matter where he roams.

When building out the Mercedes Sprinter, the first things Sebastian fitted included a roof rack with a ladder and two Dometic SP7 side windows, because they were just the right size for the sliding door and the kitchenette. Sebastian and Line love cooking. And naturally, they wanted a quality hob for their Mercedes Sprinter Camper – one that would last for a long time. Finally, they picked a 3-burner hob from Dometic. Their travel provisions are stored in a Dometic RC 10.4T 70 compressor fridge. The roomy 70-liter appliance snugly fits under the 90 cm high counter of their kitchenette. Their former fridge, a CFX3 35 powered cooler, now serves as a chest freezer. It stores the raw food for Finley, Sebastian's and Line's Golden Retriever, who was one of the reasons why they decided they need a roomier vehicle.

To those considering car camping for themselves Sebastian says: "Do it! You'll get to know yourself and the world better and end up seeing beautiful places you didn't have on your mind!" The overlanding lifestyle is a constant education. Sebastian and Line have learned that things rarely go as planned on a trip and that part of the adventure is being prepared for everything with the right gear and the right attitude.

Along their many travels, they swam with sharks in Australia, bungee jumped in Scotland, and canoed in Sweden, along with many other feats. Despite their extensive travels, their bucket list is impossibly long. Some day they hope to make it to Alaska. Right now, Sebastian and Line don't see an end to their overlanding adventures. They plan to keep going, to inspire others, and to expect the unexpected every day.



[instagram.com/offthepath](https://www.instagram.com/offthepath)

Coming Soon

A PEACEFUL NIGHT'S SLEEP

UNDER THE STARS



The Dometic TRT120E can be set up in a matter of minutes thanks to its powered 12V operation and remote control (included). A peaceful night's sleep is guaranteed with its 5 cm thick, high density foam mattress which is big enough to comfortably fit two people. Entering the tent is easy thanks to the lightweight, telescopic aluminium ladder.



ROOFTOP 4WD TENT

Experience more with the Dometic TRT120E rooftop tent. The TRT120E includes a 5 cm, high density foam mattress that's big enough to comfortably sleep two people. Built for the outdoors, the TRT120E features a two layer construction, suitable for even the most remote destinations in the middle of winter. The TRT120E's robust design is further enhanced by a durable water resistant PVC tent cover with a UPF 50+ protection rating, and can handle just about anything that is thrown at it. Thanks to the double layered windows with integrated fly screens, you can get plenty of airflow through the tent while keeping insects out. Despite the robust construction of the TRT120E, its frame is made from lightweight aluminium alloy. Setting up the TRT120E is simple with a 12 V operation and wireless remote control that assembles the tent in a matter of minutes.

Dometic TRT120E rooftop tent

- 5 cm high density foam mattress big enough to sleep two
- Can be set up in less than one minute with the included remote control
- Integrated fly screen to allow airflow through the tent and keep insects out
- Lightweight telescopic aluminium ladder
- Heavy duty PVC tent cover
- Water resistant and UPF 50+ two layer fabric
- Tent frame is made from lightweight aluminium alloy



Keep insects out

Four double layered windows ensure effective ventilation.



Powered set up

Setting up is easy at the touch of a button.



Insulated

Two layer fabric construction for excellent thermal insulation.



Protection

Tent cover is manufactured from durable water-resistant PVC.



Comfortable

5 cm thick high density foam mattress.



Easy access

Access the tent with the lightweight telescopic aluminium ladder.

New

INFLATABLE MODULAR SHELTER



DOMETIC HUB

With the HUB, versatility is built in. Whether it's weekends away in the SUV, family vacations in the campervan or quick and convenient shelter from sun in the garden or park, the Dometic HUB has you covered. Adapt the HUB to suit your needs, start with the base shelter and add an annexe, mesh panels, wall panels and connection tunnels to suit SUVs and campervans. Single point inflation Air Frame technology and QuickPitch straps ensure you are pitched and ready to enjoy the outdoors in no time.

Key benefits

- Modular shelter
- Multiple applications
- Wide range of accessories
- Single point inflation
- Optional zip-in panels



Single point inflation

Single Point Inflation awnings inflate from just one external inflation point.



Multiple application

Use free-standing or zip-on optional connection tunnels to connect to 4x4s and campervans.



QuickPitch™ guying system

Set-up in seconds. Peg the bottom strap taut and adjust the buckle to apply tension.



PVC groundsheet

The durable PVC shelter base has been incorporated to resist damage when pitching on hard and stony ground.



Sleeping annexe

Complete with inner tent and zipped wall, this optional annexe is great for extra guests, pets and storage.



Optional accessories

Add optional mesh panels, wall panels and connection tunnels to suit your SUV or campervan!

DOMETIC PATROL ICEBOXES



Through heat and dust, pouring rain and mud, Dometic Patrol ice chests take it all in their stride. The robust one-piece rotomolded polyethylene design makes the ice chest tough enough for years of outdoor adventure. On hikes, rides and climbs, its dependable cool storage make the Patrol an ever present companion. Ready for the challenge, it dares you to go further because it can handle harsh treatment. And every scratch tells a story.



ICEBOXES WITH A SENSE OF ADVENTURE

DOMETIC PATROL

Benefits with Dometic Patrol

- Thick PU insulation keeps ice frozen for days
- Large, leak-proof drain makes cleaning easy
- Deep-freeze lid seal ensures no gaps for air to enter or escape
- Rugged construction with one-piece rotomolded PE
- One-handed rubber latches for convenient opening and closing of the lid



Highly insulated

Keeps ice cold for days



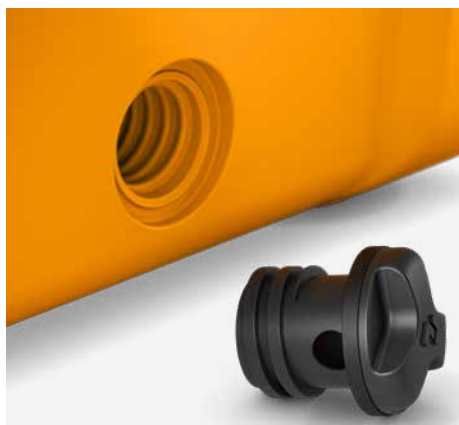
Tough design

One-piece rotomolded polyethylene



Freezer seal

Deep freezer seals with thick PU insulation keeps cold air trapped inside



Large drain

Leak-proof drain for easy cleaning



Easy access

Open with one hand thanks to convenient rubber latches



Convenient dock

Multi-use dock with cup holder, bottle opener and fishing rod holder

FUEL YOUR ADVENTURE

DOMETIC DRINKWARE

Designed to keep drinks cold or warm for longer, Dometic thermo bottles can be used for water, coffee or tea. Their tough stainless steel construction makes the insulated vacuum sealed bottles fit for years of use and reduces the use of disposable bottles.

The Dometic drinkware range also includes matching cups and tumblers – all made from high-quality stainless steel, BPA-free and dishwasher-safe. Practical on the road: Dometic bottles, cups and tumblers fit all standard cup holders.

Stainless steel cups, bottles and tumblers

- Fits all standard cup holders
- Double wall insulation keeps drinks hot or cold (Tumbler 6h & 12 h, Thermo bottle 12h & 24 h, Cups N/A)
- Durable construction with comfortable, ergonomic design
- BPA free
- Dishwasher safe



Dishwasher safe

Cleaned easily in the dishwasher and ready for your next adventure.



Hot or cold

Double wall insulation keeps drinks for hot for 6 h or cold for 12 h.



Durable

Stainless steel body is robust and provides a comfortable drinking experience.

GREEN ENERGY FOR YOUR OUTDOOR ADVENTURE

DOMETIC STRENGTHENS ITS PRESENCE IN THE MARKET FOR SOLAR POWER SOLUTIONS



The market demand for sustainable off-grid mobile power solutions is rapidly increasing as more and more people spend time outdoors using a vehicle or boat as the base. Thanks to a series of strategic acquisitions accomplished in 2021, we can provide you with a variety of great products, especially in the area of mobile solar power supply.

NEW DOMETIC GROUP MEMBERS IN GERMANY, NORTH AMERICA, AUSTRALIA AND SOUTH AFRICA

BÜTTNER | DOMETIC

Büttner Elektronik is a Germany-based provider of high-end mobile power products, including solar power solutions, batteries and battery chargers. Visitors to our booth can discover how Büttner products deliver green energy for Dometic refrigerators and cooling boxes.

ZAMP SOLAR | DOMETIC

Zamp Solar is a leading North American manufacturer of innovative, high-quality mobile solar power solutions for the outdoor market. Zamp Solar's products are known for their high quality and recycled contents.

Enerdrive | DOMETIC

Enerdrive is an Australian-based provider of mobile power products. The company's product range includes solar power solutions, batteries and battery chargers sold to customers in the RV, CPV and Marine sectors.

Go Power! | DOMETIC

Go Power! is a leader in North America's mobile solar power industry with over 20 years of experience in the RV and fleet truck market. The Go Power! brand is recognized for its smart solar power solutions for recreational and industrial applications

Valterra

Valterra is a leading North American provider of aftermarket products, consumables and accessories for the RV sector and other industries. The product range includes, among others, sanitation products and electrical accessories.

Front Runner Vehicle Outfitters

Front Runner Vehicle Outfitters, based in South Africa, is a global provider of high-quality products for the outdoor market. Its products include roof racks, rooftop tents, lightweight ladders and smart storage solutions like the SSDR005 Middle Sized Drawer on show in our Ambassador Vehicle.

Coming Soon

INNOVATION VEHICLE DISCOVER FUTURE TRENDS

Do you want to take a look at the future? Join us on a tour through our Innovation Vehicle! For visitors at this year's Caravan Salon, we have equipped our transparent exhibition platform with upcoming Dometic products and future concepts of mobile living solutions.

FULL CLIMATE SOLUTION

**Air conditioning, heating
and ventilation – all
perfectly coordinated for
the best possible climate**



The idea is to connect all climate solutions in one for the best climate inside the cabin and the lowest energy consumption. Our new "full climate" solution includes a new roof air conditioner, a new combo heater for cabin air and warm water, and a smart ventilation system. The products will hit the market in 2022.



NEXT- GENERATION KITCHEN GEAR

Stylish design and unique features – just like in your kitchen at home



- New Dometic design for our stainless steel cooktops and combinations
- New gas-on-glass and induction cooktops
- Easy upgrading: new products have the same dimensions as the predecessors
- New Dometic burners – best in class with the lowest CO₂ emission in the market
- Unique features: illuminated knobs, embedded 12 V ignition, soft-closing lids, etc.
- New sets of accessories for a complete cooking experience
- Product launch anticipated in 2022



Future concepts

SMART RV REFRIGERATORS WITH CAMERAS AND DISPLAY SCREENS

For this concept study we equipped our 10-series RV refrigerators with cameras both inside and out as well as a screen on the front panel. The benefit of this solution: You can check your provisions without opening the fridge door – which saves energy by limiting exposure to warm outside temperatures.



MOTOR-OPERATED DARKENING SYSTEM

Inspired by “smart home” technology: Our new window covering solution is operated by a motor for enhanced comfort and convenience. State-of-the-art IoT technology enables remote operation. That means you can control the inside climate even when you are far away from the vehicle.



AUSTRALIA**Dometic Australia Pty. Ltd.**

1 John Duncan Court
Varsity Lakes QLD 4227
Tel +61 7 55076000
Fax +61 7 55076001
Mail sales@dometic.com.au

AUSTRIA & CZECH REPUBLIC**Dometic Austria GmbH**

Neudorferstrasse 108
A-2353 Guntramsdorf
Tel +43 2236 908070
Mail info@dometic.at

DENMARK**Dometic Denmark A/S**

Nordensvej 15, Taulov
DK-7000 Fredericia
Tel +45 75585966
Fax +45 75586307
Mail info@dometic.dk

FINLAND**Dometic Finland OY**

Valimotie 15
FIN-00380 Helsinki
Tel +358 20 7413220
Mail myynti@dometic.fi

FRANCE**Dometic SAS**

ZA du Pré de la Dame Jeanne
B.P. 5
F-60128 Plailly
Tel +33 3 44633500
Mail info@dometic.fr

GERMANY**Dometic Germany GmbH**

Hollefeldstraße 63
D-48282 Emsdetten
Tel +49 (0) 2572 879-0
Mail info@dometic-waeco.de

HONG KONG**Dometic Asia Co., Limited**

Suites 2207-10, 22/F
Tower 1, The Gateway
25 Canton Road
Tsim Sha Tsui
Kowloon, Hong Kong, China
Tel +852 2456 5199
Fax +852 2466 5553
Mail info.ap@dometic.com

HUNGARY**Dometic Zrt.**

Értékesítési iroda
1143 Budapest
Gizella út 42-44 (Moha Ház)
Tel +36 1 468 4400
Fax +36 1 468 4401
Mail budapest@dometic.hu

ITALY**Dometic Italy S.r.l.**

Via Virgilio, 3
I-47122 Forlì (FC)
Tel +39 0543 754901
Fax +39 0543 754983
Mail vendite@dometic.it

JAPAN**Dometic KK**

Maekawa-Shibaura, Bldg. 2
2-13-9 Shibaura Minato-ku
Tokyo 108-0023
Tel +81 3 5445 3333
Fax +81 3 5445 3339
Mail info@dometic.jp

MEXICO**Dometic Mx, S. de R. L. de C. V.**

Circuito Médicos No. 6 Local 1
Colonia Ciudad Satélite
CP 53100 Naucalpan de Juárez
Estado de México
Tel +5255 5374 4106
Fax +52 55 5393 4683
Mail info@dometic.com.mx

NETHERLANDS & BELGIUM**Dometic Benelux B.V.**

Innovatiepark 12
NL-4906 AA Oosterhout
Tel NL +31 76 5029000
Tel BEL +32 (0) 23598040
Fax +31 76 5029 090
Mail sales@dometic.nl
sales@dometic.be

NEW ZEALAND**Dometic New Zealand Ltd.**

PO Box 12011
Penrose 1642, Auckland
Tel +64 9 622 1490
Fax +64 9 622 1573
Mail customerservices@dometic.co.nz

NORWAY**Dometic Norway AS**

Elveveien 30B
N - 3262 Larvik
Tel +47 33 42 84 50
Fax +47 33 42 84 60
Mail info@dometic.no

POLAND**Dometic Poland Sp. z o.o**

ul. Puławska 435A
PL 02-801 Warszawa
Tel +48 22 414 32 00
Mail info@dometic.pl

PORTUGAL**Dometic Spain, S.L.**

Branch Office em Portugal
Rot. de São Gonçalo nº 1 – Esc. 12
2775-399 Carcavelos
Tel +351 219 244 173
Fax +351 219 243 206
Mail info@dometic.pt

RUSSIA**Dometic RUS LLC**

18 Malaya Pirogovskaya str.
bld 1, office 505
Moscow 119435
Tel +7 495 374 8896
Fax +7 495 916 56 53
Mail info@dometic.ru

SINGAPORE**Dometic Pte Ltd**

18 Boon Lay Way
06-141 Trade Hub 21
Singapore 609966
Tel +65 6795 3177
Fax +65 6862 6620
Mail dometic@dometic.com.sg

SLOVAKIA**Dometic Slovakia s.r.o.**

Sales Office Bratislava
Nádražná 34/A
900 28 Ivanka pri Dunaji
Tel +421 2 45 529 680
Fax +421 2 45 529 680
Mail bratislava@dometic.com

SOUTH AFRICA**Dometic (Pty) Ltd.**

Aramex Building
2 Avalon Road, West Lake View
Ext 11, Modderfontein
P.O Box 2562
2008 Bedfordview, South Africa
Tel +27 873 530 381/2/3/4
Mail info@dometic.co.za

SPAIN**Dometic Spain, S.L.**

Avda. Sierra del Guadarrama, 16
E-28691 Villanueva de la Cañada
Madrid
Tel +34 91 833 60 89
Fax +34 900 100 245
Mail info@dometic.es

SWEDEN**Dometic Scandinavia AB**

Gustaf Melins gata 7
SE-421 31 Västra Frölunda
Tel +46 31 7341100
Fax +46 31 7341101
Mail info@dometic.se

SWITZERLAND**Dometic Switzerland AG**

Riedackerstrasse 7a
CH-8153 Rümlang
Tel +41 44 8187171
Mail info@dometic.ch

UNITED ARAB EMIRATES**Dometic Middle East FZCO**

P.O. Box 17860
S-D 6, Jebel Ali Freezone
Dubai
Tel +971 4 883 3858
Fax +971 4 883 3868
Mail info@dometic.ae

UNITED KINGDOM**Dometic UK Ltd.**

Dometic House, The Brewery,
Blandford St. Mary
Dorset DT11 9LS
Tel +44 344 626 0133
Fax +44 344 626 0143
Mail sales@dometic.co.uk

USA**Dometic RV Division**

1120 North Main Street
Elkhart, IN 46515
Tel +1 574-264-2131

We distribute our products in around 100 markets. Please ask for your contact point if not listed here, or check our website **dometic.com**

Mobile living made easy.

