

SKYSOL Track Small

Order Form and Product Guide

Customer _____
 Address _____

Tel _____
 Mobile _____
 Email _____

Order _____
 Quote _____
 Date _____
 Project Name _____
 Project Location _____

1	2	3	4	5	6	7	8	9	10	11	12	13
ID	Location	Width (X) ¹	Straight line Length(Y) ²	Honeycomb Fabric code ³	Single or Double Ended	Head rail	Moving rail	Side track	Track curved or straight ²	Fill in one option only		Qty
										Manual handle type	Powered switches, transformers or controls required	
1					Powered Single Motor Code ⁷ _____ Manual Single Double Ended meet in middle Second Fabric _____	White Beige Graphite Custom	White Beige Graphite Custom	White Beige Aluminium Custom	Curved DWG or CAD Template Straight (A radius greater than 6260 mm [246 ^{7/16"}] will be treated as straight)	None Plastic Articulating Fixed Metal Nickel Metal Chrome Clear (Control Rod) Rod Length (mm) _____ Qty ⁵ _____	Yes ⁴ No	
2					Powered Single Motor Code ⁷ _____ Manual Single Double Ended meet in middle Second Fabric _____	White Beige Graphite Custom	White Beige Graphite Custom	White Beige Aluminium Custom	Curved DWG or CAD Template Straight (A radius greater than 6260 mm [246 ^{7/16"}] will be treated as straight)	None Plastic Articulating Fixed Metal Nickel Metal Chrome Clear (Control Rod) Rod Length (mm) _____ Qty ⁵ _____	Yes ⁴ No	

- The blind will work in a recess that is up to 10mm wider than the specified X.
- Template or drawing must be provided for curved tracks if the radius is less than 6260 [246 ^{7/16"}].
- 25mm Honeycomb only, please see fabric collection for codes.
- Please fill in a powered accessories custom order form.
- Specify quantity of rods per blind or boat set.
- Colour matched to hardware.
- Please see Product Leaflet for motor options and code

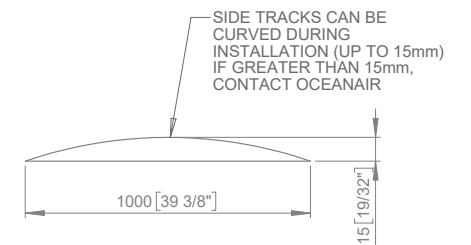
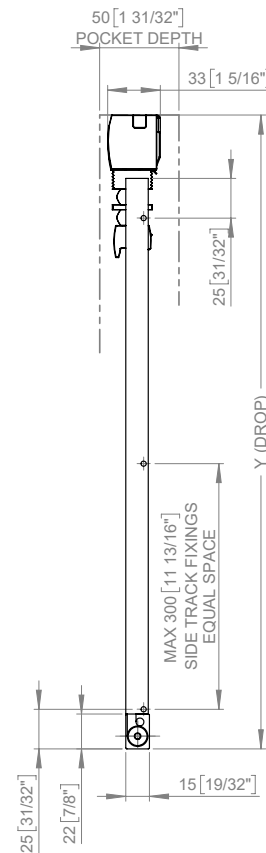
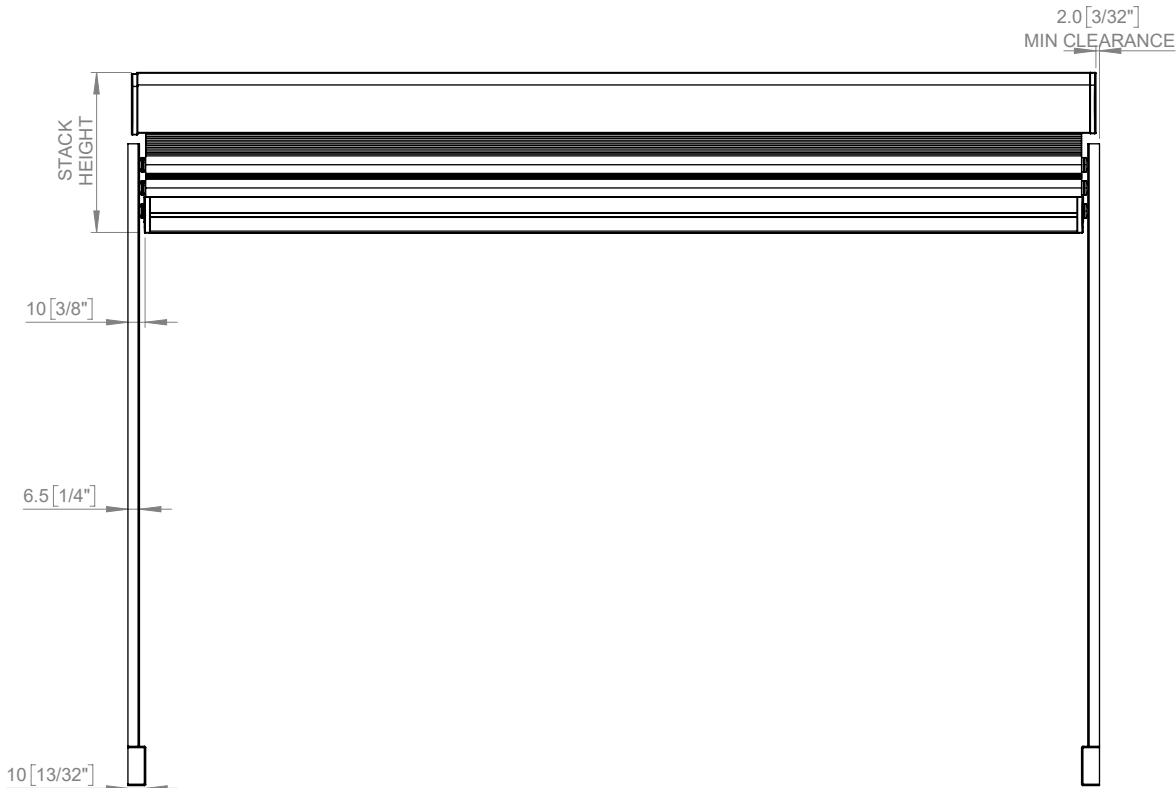
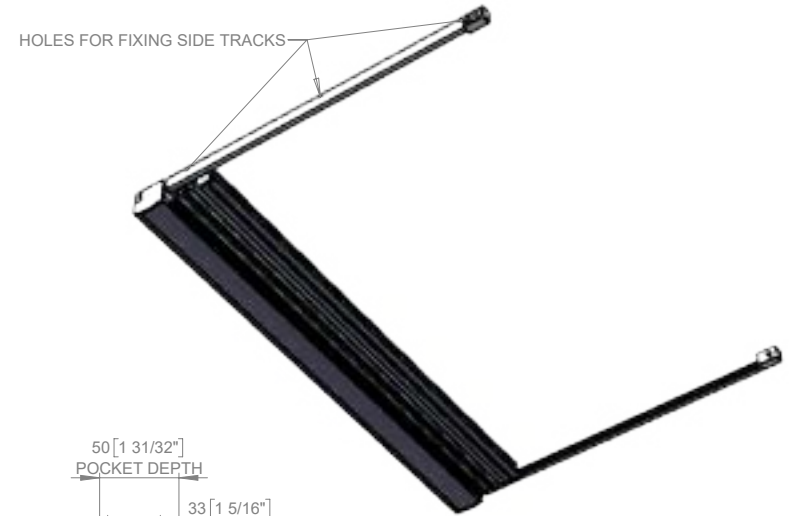
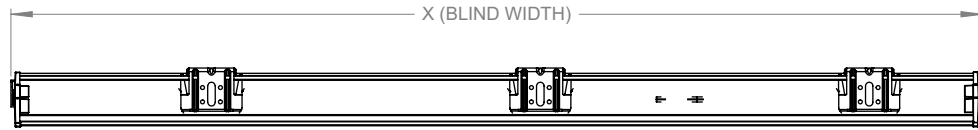
Minimum and Maximum Dimensions

	Width (X)		Drop (Y)		
	Min	Max	Min	Max	
				Single Ended	Double Ended Meet In the Middle
Manual	350mm [13 ^{3/4"}]	1200 mm [47 ^{1/4"}]	400 mm [15 ^{3/4"}]	3000 mm [118"]	3000 mm [118"]
Powered	675 mm [26 ^{1/2"}]		700 mm [27 ^{9/16"}]	2200mm [86 ^{5/8"}]	N/A

SKYSOL Track Small

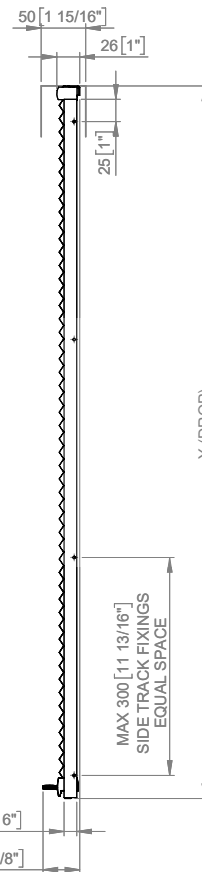
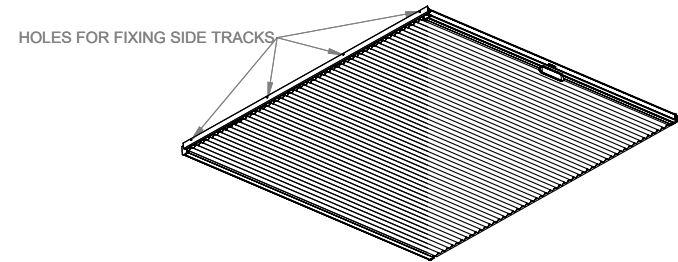
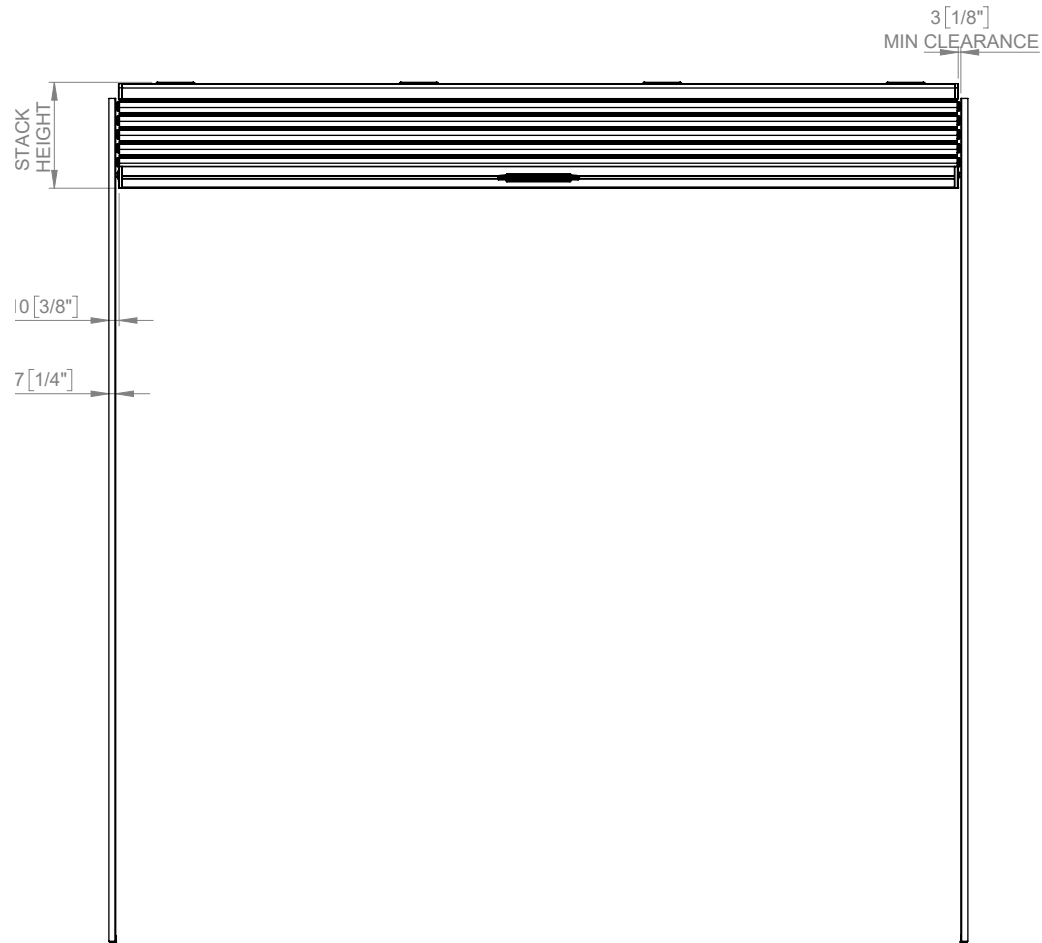
Powered

Order Form and Product Guide



SKYSOL Track Small

Manual



HANDLE OPTIONS

