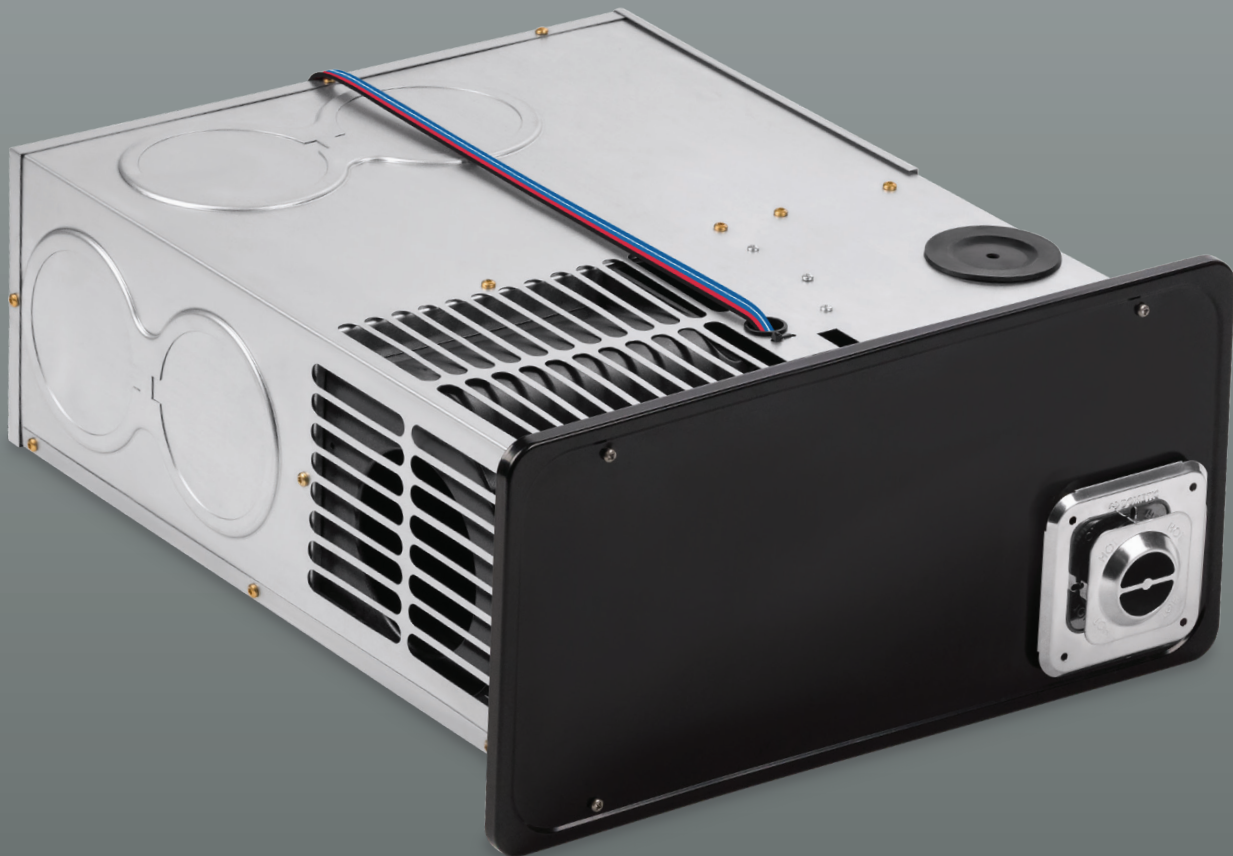


↗ DOMETIC

# 35K FURNACE ESSENTIAL

WITH HALL EFFECT SENSOR & ON-BOARD SOFT START



#### PATENT-PENDING HALL EFFECT SENSOR

The automotive-grade Hall Effect Sensor offers a durable, debris-resistant upgrade that helps reduce warranty claims.



#### ON-BOARD SOFT START

No more jarring start ups with reduced in-rush current, helping prevent breaker trips and minimize power strain.



#### BETTER HEAT DISTRIBUTION

Advanced air baffles ensure balanced airflow through every duct, eliminating cold spots—even in large RVs.

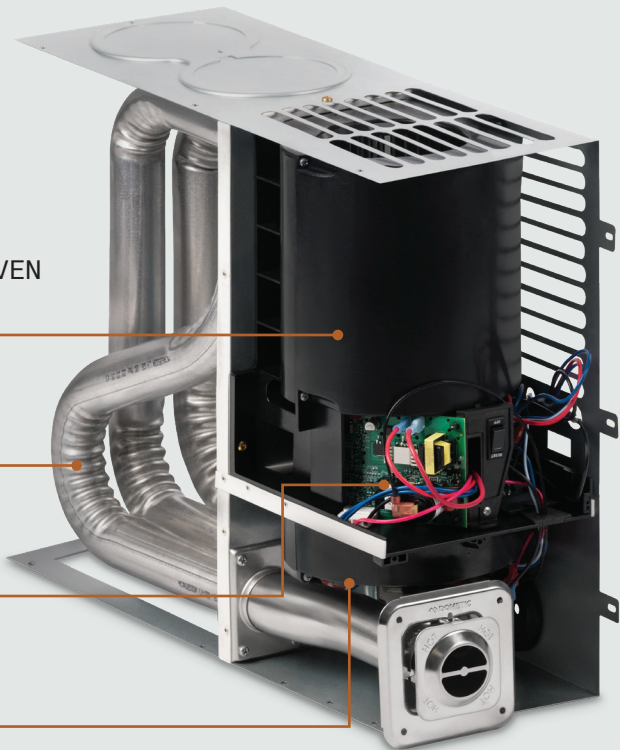
# SMARTER, STRONGER AND MORE DURABLE THAN EVER

AIR BAFFLE SYSTEM-ADDED AIR BAFFLES PROVIDES EVEN HEAT SUPPLY IN EACH DUCT AND THROUGHOUT CABIN

TUBULAR HEAT EXCHANGER-ONE-PIECE DESIGN, BETTER HEAT TRANSFER

ON-BOARD SOFT START REDUCES IN-RUSH CURRENT UP TO 80%

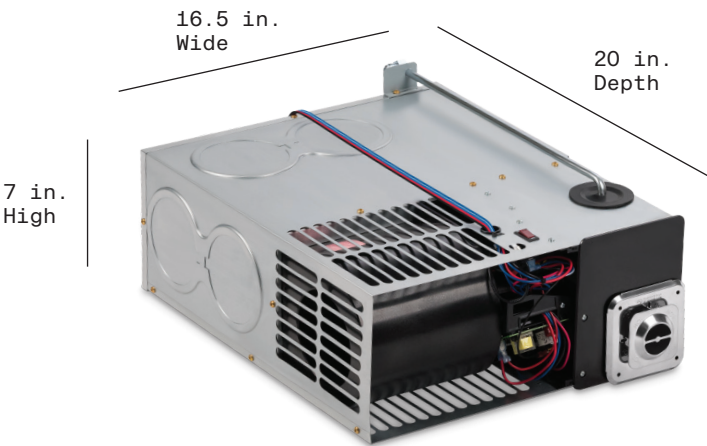
HALL EFFECT SENSOR-ELIMINATES MOVING PARTS FOR GREATER DURABILITY



## KEY BENEFITS

- **MORE RELIABLE PERFORMANCE WITH FEWER WARRANTY CLAIMS**  
Thanks to a solid-state, patent-pending Hall Effect Sensor that eliminates moving parts.
- **SMOOTHER, QUIETER STARTUPS THAT PROTECT YOUR POWER SYSTEM**  
Built-in Soft Start reduces in-rush current by 80% and softens loud startup noise.
- **FASTER, MORE EVEN HEAT THROUGHOUT THE RV**  
18–22% more airflow and advanced air baffles eliminate cold spots.
- **GREATER EFFICIENCY AND LONG-TERM DURABILITY**  
Seamless, one-piece tubular heat exchanger maximizes heat transfer and resists wear.
- **EASY INSTALLATION ACROSS MULTIPLE RV LAYOUTS**  
Compact, lightweight design installs vertically or horizontally without extra kits.
- **FASTER SERVICE AND MORE RELIABLE AVAILABILITY**  
Assembled in the U.S.A. to reduce lead times and streamline parts support.

## DIMENSIONS



Scan the QR code or visit  
**Dometic4Business.com**  
to learn more about  
the 35K Furnace Essential

## SPECIFICATIONS

MODEL	35K Furnace
SKUS	9610007791, 9610007792, 9610007793, 9610007794
BTU OUTPUT	35,000
WEIGHT	26 lbs
WARRANTY	2 Years
PACKAGING	Single & Bulk
VOLTAGE	12V
FUEL TYPE	LP Gas
AMP DRAW	11.1 A
MOUNTING	Vertical or Horizontal
MODEL OPTIONS	Door and No Door
CUT OUT SIZE WITH DOOR	17" W x 7.25" H
CUT OUT SIZE NO DOOR	3.5" round hole