

CLIMATE



# GREEN GVTX SERIES VARIABLE CAPACITY

GVTX Series self-contained units, now with low GWP refrigerant provide variable capacity cooling and heating for maximum system efficiency.

**QUIET OPERATION**  
VARIABLE CAPACITY

**ELECTRONIC EXPANSION VALVE**  
PRECISE CONTROL

**TITANIUM CONDENSER**  
ROBUST CONSTRUCTION



100-240V/50-60Hz/1-Ph



3,000 - 18,000 BTU

Mobile living made easy.

 **DOMETIC**

# G-SERIES GVTX VARIABLE CAPACITY SELF CONTAINED SYSTEM

Climate comfort is key to having a relaxing day on the water. With Dometic's Variable Capacity self-contained air-conditioner, you get a system that regulates compressor speed based on the cooling or heating demand in your vessel. Once the boat has reached the desired set point, the compressor will run at a reduced speed. This results in a quiet operation, power efficiency, improved dehumidification and a constant temperature for ultimate comfort.

By using a variable speed compressor in lieu of a fixed speed compressor, the system provides substantial cost savings. Depending on the age and efficiency of your current system, you can see a significant reduction in amperage. The ECO mode function on the GVTX also allows you to lower your compressor speed to limit amperage, preventing system shutdown in limited power situations.

The GVTX unit equipped with an adjustable speed compressor runs longer cycles at lower speeds instead of constantly starting and stopping. This significantly reduces the wear and tear on the equipment, resulting in lower repair costs and less downtime.

Traditional air conditioners and heat pumps are subjected to numerous hard starts over the life of the equipment, which places a great deal of stress on critical internal components. Running longer cycles at lower speeds reduces the number of times the system must hard start. Over time, this can help extend the service life of the equipment.



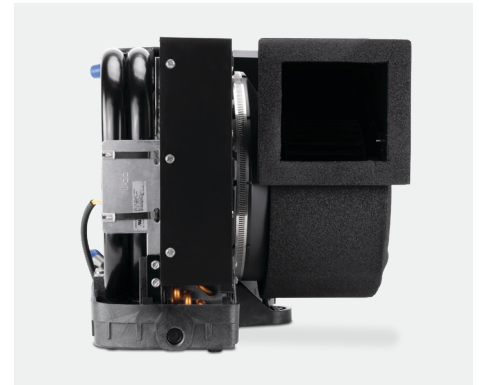
## Variable Capacity

GVTX variable capacity unit available in two size options that will provide cooling from 3500BTU to 18,000BTU.



## DC Blower

Includes a high static DC blower.



## Compact Size

Retro-fittable for Turbo units.



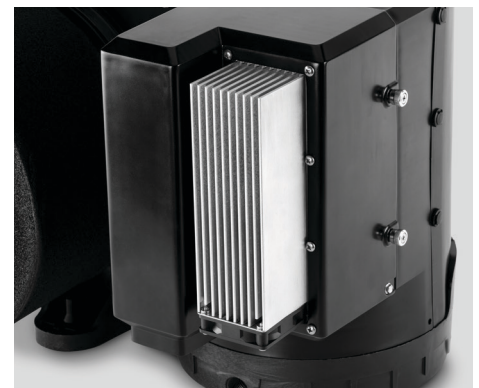
## Titanium Condenser

Robust Design.



## Sound Cover

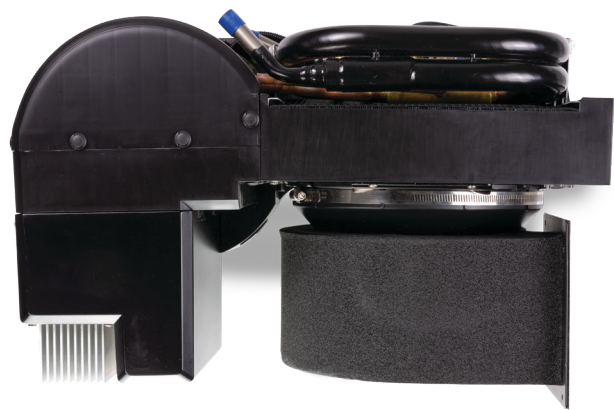
Quiet operation.



## Removable Electric Box

Can be remote mounted.

# HIGH EFFICIENCY COOLING IN A COMPACT PACKAGE



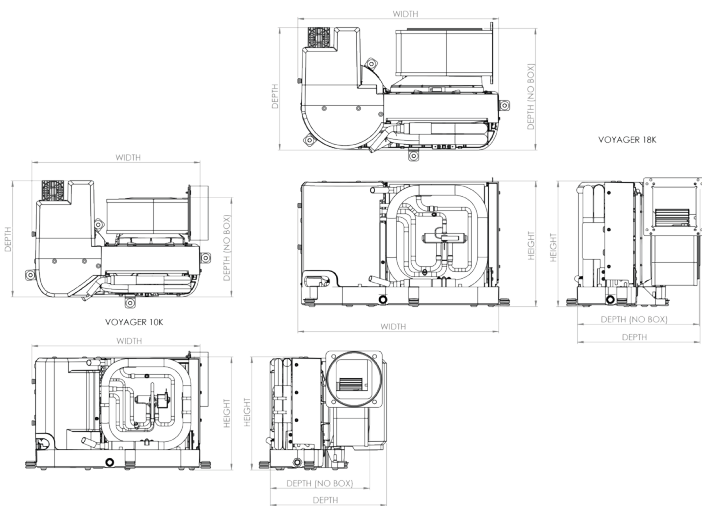
The GVTX system in typical applications can run at low speeds maintaining temperature in your vessel. At the lower speeds you will see a 40% reduction in system noise, resulting in very quiet operation. The GVTX is also equipped with a sleep mode function that allows for a quiet and uninterrupted great night’s sleep.

The GVTX provides the ultimate in temperature and humidity control. Longer cycles at lower speeds help maintain even temperatures throughout the vessel, and hot spots and stale air pockets are eliminated. In many instances, you’ll enjoy a better level of comfort at a higher thermostat setting.

## Key Features & Benefits

- R454B Low GWP refrigerant
- Available in 3.5-10k, 6-18k BTU
- Runs on both 115/60Hz and 230/50-60Hz
- Variable capacity compressor
- Titanium condenser coil
- BLDC high velocity rotatable blower
- Reverse cycle heat
- Composite positive flow condensate pan
- Standard sound cover
- No starting amperage
- Built in network hardware NEMA2000
- Electric box can be remote mounted
- CE compliant

## GVTX Dimensions



| MODEL                            | GVTX10       | GVTX18       |
|----------------------------------|--------------|--------------|
| Capacity (BTU)                   | 3,500-10,000 | 6,000-18,000 |
| Voltage (V)                      | 100-240V     | 100-240V     |
| Cycle (Hz)                       | 50 or 60     | 50 or 60     |
| Min. Capacity Input Power (kW)*  | 140          | 200          |
| Full Capacity Input Power (kW) * | 723          | 1256         |
| Max. Circuit Breaker 115V (A)    | 15           | 20           |
| Max. Circuit Breaker 230V (A)    | 10           | 10           |
| Refrigerant Type                 | R454B        | R454B        |
| Height (in/mm)                   | 12.3/312.4   | 13.6/345.4   |
| Width (in/mm)                    | 18.3/464.8   | 21.8/553.7   |
| Depth (in/mm), ebox on unit      | 12.6/320     | 13.2/337.8   |
| Depth (in/mm), ebox remote       | 10.8/274.1   | 13.2/335.3   |
| Gross Weight (lbs/kg)            | 49/22        | 61/28        |
| Net Weight (lbs/kg)              | 41/19        | 51/23        |
| Height-Electrical Box (in/mm)    | 9.8/248.9    | 9.8/248.9    |
| Width-Electrical Box (in/mm)     | 6.9/175.3    | 6.9/175.3    |
| Depth-Electrical Box (in/mm)     | 6.3/160      | 6.3/160      |
| Recommended Duct Size (in/mm)**  | 6/152        | 7/178        |

\*In cool mode at 85° F water.

\*\*Duct size may change based on BTU load requirements.



# INDEPENDENT CONTROL FOR PERSONAL COMFORT!



Intuitively designed touch screen, with easy to understand user menu. 2.4" LCD screen with vivid color and clarity. Combine the display with the Vimar Eikon bezel to coordinate with any room's décor. Display Bezel sold separately.

## ECO Mode

Operational capacity is critical when boats are powered by small generators, unreliable shore power, or batteries. To help extend running time and limit power usage, the GVTX offers ECO mode. When enabled, ECO mode limits the maximum power used by the unit. This results in a significant reduction in required current and an increase in energy efficiency. By reducing the unit's maximum capacity, customers can enjoy extended comfort throughout their boat.

ECO mode can be enabled and adjusted through the Functions screen via a simple interface. The mode is indicated on the main screen by a leaf symbol.

## QUIET Mode

A good night's rest is important, especially when you are on your boat. The GVTX allows users to enable sleep mode to limit the maximum speed of the fan, reducing disturbances during the night. Sleep mode ensures the fan runs consistently, unlike the on/off cycling of traditional air conditioning systems. If the GVTX is overly restricted in sleep mode, the unit will bypass this mode to bring your space back to a comfortable temperature.

QUIET mode can be enabled and adjusted through the Functions screen via a simple interface. The mode is indicated on the main screen by a leaf symbol. While in sleep mode the unit's low power consumption allows it to be powered by a lithium-Ion battery and AC inverter.

## Scheduling

It can be frustrating to constantly adjust your thermostat throughout the day. Why waste energy cooling or heating your stateroom when you only enter the room at night? With the GVTX scheduling system, you can time temperature adjustments to match your needs, saving both time and energy. The scheduling feature also allows customers to set ECO and SLEEP modes and select specific days of the week.

## Zoning

Using multiple units to cool the same space is common in the boating industry, as it provides flexibility and redundancy for the cooled zone. The GVTX supports zoning over the NEMA 2000 network, enabling control of multiple units with a single display. This feature reduces the number of displays on board and provides a clean, unified interface for controlling the zone. Once units are connected via the NEMA 2000 network, the zones can be easily found and selected through the Parameters menu.

